

HIRE & RENTAL

AUSTRALASIA

Volume 2 Number 3 1981

Registered for Posting as a Periodical - Category (B)

OFFICIAL JOURNAL OF THE HIRE ASSOCIATION OF AUSTRALIA AND HIRE SERVICES ASSOCIATION OF NEW ZEALAND INC.

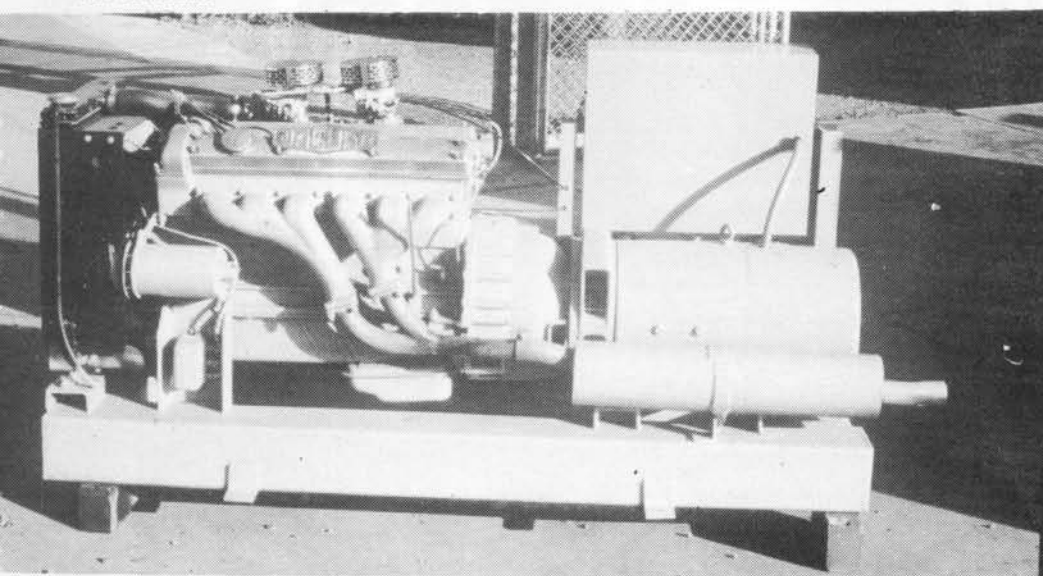


**HIRER
OF THE
MONTH**

**M. A. Macfarlane
and Co.**



250KVA Cummins powered diesel generating Set, complete with weather proof canopy and 24 hour run fuel tanks.



Cover photo:

The 90KVA mobile soundproof generator and trailer are powered by Volvo engines. Macfarlanes have 3 of these units in their hire fleet.

Left:

A "Jaguar" powered 25KVA generating Set using a 2.4 litre 6 cylinder jaguar car engine. Engine supplied by another Macfarlane business **Jagparts** which specialised in wrecking Jaguar vehicles.

Lower Left:

A 70KVA Dorman powered 6 cylinder air cooled trailer mounted generator mounted on Jaguar wheels.

Lower:

In his spare time Gerald Kay enjoys a bit of Motor Racing. This photo depicts Gerald having a dice with another Dolomite Sprint in the 1980 Bathurst 1000.



Hirer of the month

M A Macfarlane & Co

Specialists in generator rentals

The Macfarlane rental fleet provides portable electric power to service Australia's fast growing film and television industry, for large sporting functions, and to provide long term and emergency power for industry.

Their large fleet, now in excess of 60 units, ranges in size from 12 KVA to 700 KVA and units are available with skid, trailer or truck mounting to suit all applications.

Gerald Kay, Owner and Managing Director of this specialized rental business, commenced work as an apprentice electrician with the Clayton based electrical contractor M.A. Macfarlane & Co. in 1957.

At that time a contractual arrangement, providing for the servicing and installation of generating equipment existed between a major generator manufacturer and Macfarlanes.

By working with this equipment as an apprentice, Gerald gained his initial interest in generating equipment.

Gerald established his own business as an electrical contractor in both industrial and domestic fields and it was in 1966 that his business G G Kay & Co Pty Ltd, Electrical Contractors was incorporated.

It was in the same year that the company purchased the business and Clayton premises of Gerald's original employer, M.A. Macfarlane & Co.

The Macfarlane business is now headed by Gerald Kay as Managing Director, Heinz Schendzeilorz, Company Accountant, and a staff of 14 comprising an Electrical Engineer, Sales Staff, Fitters, Mechanics and Electricians.

Both companies operate from the original Macfarlane premises at 109-111 Carnish Road Clayton. A new showroom has been established this year to

house and display the Macfarlane generator fleet. These premises are situated at 50 Bendix Drive, Clayton.

Macfarlanes have built equipment which is quietly efficient. With effective use of acoustic canopies, large 90 KVA truck mounted units operate with an audible noise level of 58 dB's at 7 metres.

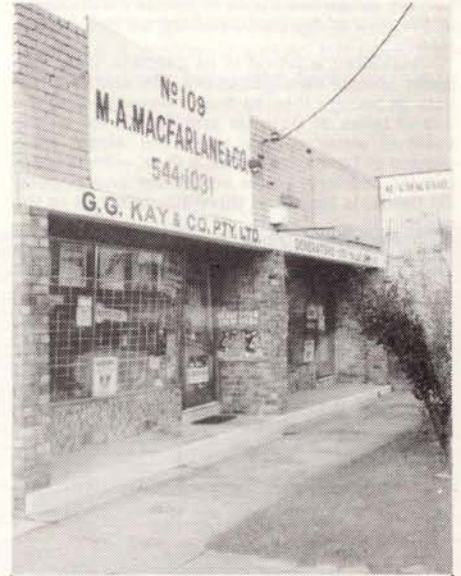
This allows the units to operate in close proximity to spectator crowds and as a result has provided access to the specialized rental markets associated with the entertainment industry.

Sound insulated truck mounted units have been built to provide mobile, on site power for television crews while filming Sporting, Musical and News events in the outdoors.

Large sound proofed trailer and skid mounted units are available for the film industry when filming on location.

A full range of diesel and petrol powered units are also available for industry.

Macfarlane Generators were air freighted to Fiji for use while filming **Blue Lagoon** and currently Cambridge Film Productions have 35 KVA and 55 KVA sound proofed units mounted on four wheel drive vehicles on site at Mansfield, Victoria for the filming of **The Man From Snowy River** starring Kirk Douglas.



Headquarters for the Rental operation, Carnish Road, Clayton, Victoria.

Producers of the popular T.V. Series **Love Boat** will use 55 KVA and 70 KVA trailer mounted units aboard the *Sea Princess* with truck mounted 55 KVA units for the wharf scenes when filming the new Australian series currently being filmed in Sydney.

Industrial breakdown and strikes also create demand for portable generators.

Macfarlanes provided 688 KVA and 350 KVA units to power the floodlights at V.F.L. park for the Night Series Football semifinal during last year's statewide electrical strike. Additional units were also provided for use by T.V. cameramen at the game.

During the 1980 pre Christmas shopping rush an industrial accident cut all electrical supply to Waverley Gardens shopping complex. It took the Macfarlane team just 1½ hours to deliver 9 large generating sets and install the temporary switchboard connections to allow trading to resume.

Macfarlanes also offer Re Hire facilities to many members of the Hire Association throughout Australia who have a call for large portable generator units.

NEW ZEALAND CONVENTION

JUNE 1st-5th 1981 HAMILTON

You are invited to the fourth H.S.A.N.Z. Convention, this year to be held in Hamilton, the heart of the New Zealand Dairying industry. Within a radius of 80kms of Hamilton, the density of animal population on pasture is unequalled anywhere in the world, and the Ruakura Agricultural Research Centre in Hamilton is internationally renowned for its immense contribution in the field of Agricultural Science and Animal Health.

Hamilton is proud of its gardens, trees and parks spread throughout the city and is fortunate in being close to ocean beaches and the inland lakes of Rotorua and Taupo for all the summer water sports, while the winter playground of Tongariro National Park, with its spectacular scenery, active volcanoes and popular ski fields, is less than three hours travel to the south.

Whether it is scenery, activities, or meeting friendly people, your attendance at the 4th H.S.A.N.Z. Convention in Hamilton, New Zealand will be an event to remember.

VENUE AND ACCOMMODATION:

All seminars will be held at the Te Rapa Racecourse, Flemington Lounge and block bookings have been arranged for accommodation at the Waikato Motor Hotel, Aaron Court Motel and Ambassador Motel.

Rates per night will not exceed \$34 Twin-/Double unit and \$29 Single. To take advantage of these rates, all accommodation must be applied for along with Convention Registrations, direct to the Convention secretary.

SOCIAL FUNCTIONS:

Your registration entitles you to participate free in all the social functions and seminars except for the optional evening entertainment on Wednesday night, where delegates have the choice of a visit to a Medieval Feast at Anderson's Restaurant Theatre, hilarious entertainment for those with a broad mind and a sense of humour, but bookings will be limited and will be made on a first in first served basis. Bookings at other restaurants serving a variety of ethnic foods will be available for those preferring a quieter night.

The breeding of racehorses in the Waikato is becoming a very important part of the agricultural scene and the optional day tour on Friday will include a visit to a top New Zealand Stud Farm and other agricultural highlights including a tour of the world's largest dairy factory at Te Rapa, or as an alternative, a trip to the Te Kauwhata Wine Research Station will be available.

A coach tour to the unique Waitomo Limestone and Glow Worm Caves on Tuesday afternoon will be a highlight and will also give delegates a chance to travel through the lush pastures of the Waikato.

Golf and squash facilities are available on Tuesday afternoon for those preferring these activities.

TRADE EXHIBITION:

The latest in equipment for all facets of the Hire Industry will be on display in the Centennial Lounge at the Te Rapa Racecourse with larger equipment and working displays outside.

The trade exhibition will be open from 11am until 2pm on Tuesday, Wednesday and Thursday and ample time will be made available for exhibitors and delegates to discuss the various merits or otherwise of the plant and equipment on display.

SEMINARS:

Seminars will be aimed at the development of managerial skills so important to the future growth of the Hire and Rental Industry and the success of the individual operations. Together with the efficient use of modern technology and staff training must be brought to the fore in our efforts to promote Hire as an industry for the future.

The seminars will commence on the theme of 'Marketing, the Tool for Future Success'.

PROGRAMME

SEMINARS and SOCIAL

FUNCTIONS

MONDAY JUNE 1st

- 1.00pm: Registrations all afternoon.
- 6.00pm: Cocktail Hour.
- 8.00pm: Evening free. Dinner available.

TUESDAY JUNE 2nd

- 9.00am: Official Opening
- 9.15am: Keynote Speaker—'Marketing Key to Success'
- 10.15: Seminar—'Budgeting and Planning'
- 10.30: Ladies Tour
- 11.00: Seminar 'Decision Making'
- 11.30: Trade Display open
- 1.30: Coach tour to Waitomo Caves incl. visit to Russell Plant Hire, Te Awamutu.
- 6.00pm: Happy Hour—Waikato Motor Hotel
- 7.30pm: Dine and Dance—Waikato Motor Hotel

WEDNESDAY JUNE 3rd

- 9.00am: Seminar 'Principals and Techniques of Purchasing'
- 9.30: Ladies Tour, Perrin Park, Heritage Bone China.
- 9.30: Seminar 'Staff Training'
- 10.30: Seminar 'Motivation and Communication'
- 11.00: Trade Exhibition open
- 3.00: Annual General Meeting
- 3.45: Open Forum: General Business
- 7.15: Andersons Restaurant Theatre—Medieval Feast, or alternative Restaurants.

THURSDAY JUNE 4th

- 9.00am: Seminar 'Stock and Inventory Control'
- 9.30: Seminar 'Computers in the Hire Industry'
- 9.30: Ladies Shopping Trip—Chandler House
- 10.30: Seminar 'Disposal of Plant' 'Welding for Recovery'
- 11.00: Trade Exhibition Open
- 1.45: Coach Tour—Hire Yards—Clydesdale Museum
- 7.00: Pre-Dinner Gathering—Turf Bar Waikato Motor Hotel.
- 8.00: Annual Banquet—Waikato Motor Hotel.

FRIDAY JUNE 5th

- 9.30: Optional all day tour—Stud Farms, Ruakura Agricultural Research Station, Dairy Factory. Te Kauwhata Wine Research Station and Winery.

All enquiries should be sent to:
The Convention Secretary,
Hire Services Assoc. of N.Z.
P.O. Box 4020, Hamilton East,
Hamilton, New Zealand.

"A Muddy Miracle"



Flextool
50 mm 212 Submersible Pump
Flexible shaft drive
Pumps mud, sludge, oil
Totally self-priming
Highly choke resistant
No costly suction hose

Designed and
manufactured by
Flextool (Aust.) Pty. Ltd.

Circle 87 on Reader Service Card

THE S. H. LOCK GROUP — Est. 1889

TRADE FINANCIERS

- LEASING FINANCE
- INSURANCE BROKING

SYDNEY

Anchor House,
Cnr. George & Bridge Sts.
Tel.: 241 1781

MELBOURNE

44 Market Street,
Tel.: 62 1874

PERTH

109 St. George's Terrace
Tel.: 321 6266

BRISBANE

99 Creek Street
Tel.: 221 9727

Circle 88 on Reader Service Card

Hire & Rental Australasia

NOW: NO INVESTMENT ALLOWANCE ON CARAVANS

Some months ago, the NSW Supreme Court decided the Investment Allowance was allowable on caravans hired out in a caravan park because the use of them had no connection with the provision of finance (as with lease purchase). Frankly, it was a strange decision, because the income tax law doesn't link the test on use by another person with the provision of finance for its purchase.

Now the Full Court has decided the owner of the caravans cannot be allowed the claim. The case was FC of T v. Tourapark Pty. Ltd.

These were the facts of the case. The taxpayer, a company, operated what's called a "motar village" where it provided accommodation for tourists in fixed-site caravans.

The caravans were available subject to certain conditions listed in a document of account.

The taxpayer argued that gave the customer a "right to occupy" the caravan for whatever period was named, and that it therefore didn't let the customer merely "use" it.

In the tax return for the year to 30th June, 1977, the taxpayer claimed the Investment Allowance on the new caravans it had purchased during the year.

The claim was disallowed and the taxpayer lodged an Objection.

What the NSW Supreme Court said in the superceded case

In the Lower Court decision, which was released early in 1980, Mr Justice Woodward allowed the Investment Allowance on the grounds that, under S.82AA(a)(ii) it would be denied only when the "use" of the item was associated with the provision of some finance for its acquisition.

But S.82(a)(ii) has three conditions, and snagging any one of them would deny the allowance.

Mr Justice Woodward's decision was made on the basis that two of them (the "use" and "the provision of finance") had to be connected. The Federal Court said he had been wrong in that interpretation.

Full Federal Court took a more literal view

In a decision released just a few weeks before Christmas, the Full Federal Court said that when a customer was given the key to a caravan, he/she was therefore given the right to "use" the caravan — subject to the conditions in the contract.

Regardless of other considerations, if the owner allowed someone else (other than an employee when employed in the owner's business) to use it, then the Investment Allowance was forfeited where that event occurred within 12 months of purchase.

Careful!

Even in company groups (one owning the item), and whether or not an adequate charge is made, granting "use" denies a claim. It would be necessary to provide an operator, then you have a service being provided.

MASTER HEAT GUN.

- Strips Paint Fast! without flames or caustic
- Plus 100's of Other Uses in the Home or Shop



In addition to stripping paint and varnish fast, the Master Heat Gun has 100's of uses around the home and shop. Here are just a few:

ACTIVATES adhesives. BENDS formica, tile, coverings, plastic rod and sheet. CURES epoxies, cures. DEFROSTS refrigerators, freezers, frozen pipes. DRIES films, paint, decoupage, laboratory equipment, electrical circuits, ignition systems. HEATS shrink tubing. LOOSENS nuts and bolts. REMOVES floor tile, bumper decals, wrinkles in vinyl upholstery. SOFTENS caulking, putty, plastics.

Check These Industrial Quality Features:

- Sturdy die-cast aluminum housing.
- Powerful high-speed universal motor.
- Quiet, efficient turbo-fan.
- Adjustable air intake.
- Double-jacketed heater housing.
- Convenient 3-way switch.
- Heavy duty 8-foot cord.
- Rubber-backed rotating base.

THESE ATTACHMENTS ADD RENTAL APPEAL



FOR COMPLETE INFORMATION ON PRICES AND SHIPPING, WRITE OR PHONE TODAY TO:

BUILDERS AIDS PTY. LTD.
10 MANNINGHAM ROAD
P.O. Box 136, 3105
Bulleen, 3105,
Australia.
Tel: (03) 850 2316

A personal matter

By SISTER MARY PHILIP

It isn't only the word "chairman" that is going to pose problems in this day of women's liberation. I have just been running down the list of "man" words in the Oxford Dictionary and it has given me food for very serious thought.

It is simple enough to convert man-holes to personholes, mandates to persondates and mandarins to person-darins. I suppose one could just as easily play a persondolin as a mandolin, given equal opportunity. But trouble crops up with words like MAnGer, MAnGe, MAnGle and MAnia. And yet, one cannot truly describe the passion to exterminate the sexes as a MAnia! Does one manipulate or personipu-late? Offer a manifesto or a personi-festo? There is surely need for consistency.

I see more and more hurdles to cross. Is a growing boy manly or personly, and will the seminary need to change its name? Does one have mannerisms or not? How dare a millionaire live in a mansion or a clergy-person in a manse? How long may a Spanish lady continue to wear a mantilla and ought Marcos remain in Manila? Shall I now have to put the clock on the personel piece and use personure on my garden? I see the extinction of manuscripts and manufacturing.

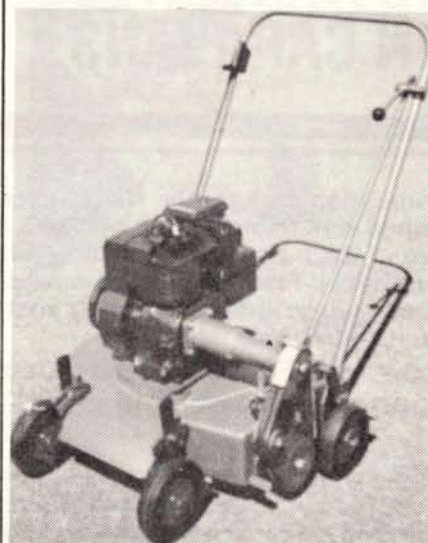
Now I come to think of it, even "person" is suspect. Why "son" rather than "daughter". Might this have to become per-person? But that won't do. I never was one for mathematics, but it looks as though the word might turn out to be "per" to the nth degree.

A dreadful thought has just occurred to me. What if the matter is pursued into France? What will happen to the le and the la? I shudder to think. No more feminine flowers and masculine vases. No more masculine telephones and feminine televisions. Oo la la! It cuts both ways, of course. If all the doors, windows, houses and chairs are feminine, and all the carpets, mirrors and books are masculine, I can see that there will need to be some personoevring on a personifestly huge scale if equality is to be maintained. It will certainly need extremely delicate personagement.

Sister Mary Philip teaches English at Aquinas College, Ballarat.

Published by Courtesy "The Age"

ROVER
AUSTRALIAN MADE



Scott Bonnar Scarifier

ROVER
AUSTRALIAN MADE

Please phone, call or write to:
Rover Mowers (Aust.) Pty. Ltd.

VIC. (03)	543 3377
NSW (02)	642 0568
TAS (003)	31 2282
Q'LD (07)	268 2571
SA (08)	45 9011
WA (09)	361 6333

Circle 73 on Reader Service Card

DEMOLITION HAMMER

An ideal rental tool.



PH-65A

These units have proven their performance in the demolition field, and a wide selection of accessories are available.

Specifications

Power Input:	1,240 W
Power Output:	650 W
Full-Load Impact Rate:	1,400/min.
Overall Length:	642 mm (25")
Weight:	15.0 kg (33.0 lbs.)

Standard Accessories:

- 1 Oil Feeder, 1 Bull Point (410 mm),
- 2 Hexagon Bar Wrench (6,8 mm),
- 1 Single-Ended Wrench (23 mm),
- 1 Steel Case.

Builders Aids Pty. Ltd.

P.O. Box 136 Bulleen 3105
Telephone: (03) 850 2316

Circle 89 on Reader Service Card

National Companies Bill

The national co-operative scheme for the uniform control over the companies and securities industry is soon to be re-introduced into the parliament.

The revised national Companies Bill introduced into the House of Representatives on 27th August last was available for public comment and submissions until 21st December 1980. The Submissions will be reviewed and the Bill, if necessary, re-drafted and re-introduced into the Autumn session of Parliament. It is expected that the Bill will be passed during that session. State Parliaments will have to pass application legislation, that is, Acts that will provide that the Commonwealth Act applies in that State. Because of the sitting times of the State Parliaments, these application Acts are not expected to be passed in every State until late in the year.

The aimed for, and currently most likely, starting date for the new Companies Act will be 1st January 1982.

We reiterate some of the proposed changes as they may affect Association Members:

- (a) The rules for lodgement of company documents have been considerably simplified to allow lodging of all documents at the Corporate Affairs Office in the home State where a company is also recognized or registered as a foreign company in another State.
- (b) A company in one State will be able to transfer its domicile to another State.
- (c) Provisions relating to the registration of charges are to be strengthened.
- (d) The obligation on a director to act honestly and use reasonable diligence is to be expanded.

- (e) The restrictions on making loans to directors or their relatives are to be extended.
- (f) The present restrictions on making payments to directors as compensation for loss of office or in connection with the transfer of company property will be tightened.
- (g) Provisions relating to the keeping of certain accounts and records are to be altered in certain respects.
- (h) The proposed new provisions governing the operation of businesses through trading trusts, the aims of which, were to —
 - (i) alert members of the public to the nature of the entity with which they may be dealing;
 - (ii) clarify the extent to which the assets and liabilities of the trust are to be disclosed in the accounts of the trustee company; and
 - (iii) set out the criminal and similar liability that arises from non-compliance with these provisions,

have now been deleted from the new Draft Bill following numerous submissions on the original Bill.

Mikasa

CHOOSE THE **RELIABLE** RAMMERS AND PLATE COMPACTORS ...

Mikasa rammers offer a range for all applications. Choose from 3 models including the MTR-80 (illustrated), MTR-55 and MTR-120.

Mikasa offer the easy site mobility of transport wheels on their plate compactors. Specify model MVC90F (illustrated) or the larger MVC-110.

Concrete vibrators and pumps also available.

an PERKINS

A division of The ANI Corporation Limited
(Incorporated in N.S.W.)

- Sydney 648 4088 • Melbourne 795 5111
- Brisbane 275 1766 • Adelaide 277 2322
- Perth 277 4888.



Circle 93 on Reader Service Card

Notes from the States . . .

No matter which way you look at it—

There's a lot of chairs

13500 in fact!



Perhaps the single biggest chair rental job in Victoria, and possibly Australia, was successfully undertaken by Victorian Hirer Abbey Rents Pty. Ltd. using the pooled resources of four Victorian hire companies: Abbey Rents Pty. Ltd., Miller Bros. Hirings Pty. Ltd., Nosedale Hire Service Pty. Ltd. and Turner's Hiring Service.

Twenty five truckloads of chairs totalling 13500 in all were delivered to the Royal Melbourne Show Grounds where all chairs had to be accurately set out to correspond with the Bookings plan, and all chairs had to be ganged into rows by the application of adhesive tape to the legs.

The chairs were required for a concert by popular entertainer Willie Nelson on his recent Concert Tour of Australia and New Zealand.

Another recent Abbey Rents project was to provide 8000 chairs for the Kiss Concert in Melbourne.

However, the assembled crowd, in the hours between 2.00 p.m. when the gates opened and the start of the concert at 8.00 p.m. found ways to use these chairs. They stacked them high in pyramids, stood on them and fought with them. The result was 1000 chairs damaged and a repair bill for \$8000.

15th April, 1981.

Mr. Brian Elms,
P.O. Box 136,
BULLEEN, Vic. 3105.

Dear Brian,

It was with very mixed feelings that Dorothy and I resigned from the Management Committee of the Hire Association of Queensland, due to the disposal of our business. Sandgate Hire Service will continue as a member company under new ownership.

Our plans for the future are indefinite, but with 15 years to catch up on around our home, there is plenty to do. However we are torn between "Idle hands are the devil's tools" and "All work and no play makes Jack a dull boy", but somewhere in between the two, we hope to strike a happy medium.

We will both miss our ties with the Association very much, and would like to take this opportunity, through the Hire Magazine, of thanking fellow members for their support and friendship, and wishing the State Associations and National Association all the very best for the future.

Yours sincerely,

Adrian Verney.
19 20th Avenue,
Brighton Q4017.

Dear Sir,

I am hoping that you could supply to me any information regarding employment in the Rental Trade in your country.

I have been involved in this trade for over two years, gaining a position of an Assistant Manager within a large Tool Hire/Sale Company in the Midlands.

I now feel that I have achieved sufficient experience in the trade to warrant a new challenge in a new country.

Any information you can send to me will be of great value.

Thanking you in anticipation of an early reply.

Yours faithfully,
G.A. CRISP
107 Frances Road,
Cotteridge,
Birmingham
B30 3DU
ENGLAND

Notes from the States . . .

Further expansion for N.S.W. hiremen.

Wreckair has moved into the N.S.W. coal development areas by opening branches in **Lithgow** and **Muswellbrook** to service the boom in coal mining. In actual fact, the Lithgow branch is located at Wallerawang, but Manager Hans Kammer said nobody could spell it, let alone find it, so they have settled to call it Lithgow. At Muswellbrook, housing is so short that Manager Don Daniel has to live in a Caravan on the premises. He reckons it is the only 24 hour service in Muswellbrook!

COATES HIRE have a new branch at the Mt. Thorley Industrial Estate, **Singleton**. This is catering for the resources development in the Hunter Valley. Wayne Fullerton, formerly Hire Controller at Coates' Newcastle branch, has been appointed Manager.

Both companies would welcome visitors passing through.

New Road Law in N.S.W.

"DO NOT OVERTAKE TURNING VEHICLE". Most N.S.W. motorists will have seen this sticker on the rear of trucks. It is not compulsory to have it on your vehicles, and it only applies to vehicles or vehicles and trailers 7.5 metres long and over. **BUT** if a driver wishes to use an adjacent lane (i.e. two lanes) to turn, then **HE WILL BE LIABLE IF HIS VEHICLE IS WITHOUT A STICKER.**

Here are the rules applying to wording, colour, size of lettering etc.

WORDING:

DO NOT OVERTAKE TURNING VEHICLE.

PLACING:

It must be fixed on the rear of the vehicle, **BUT IT CANNOT BE ON THE COMBING.**

LETTERING:

It **MUST** be printed on retro-reflective (i.e. yellow) background with **50mm BLACK, BLOCK LETTERING.**

Are you correctly listed

Our **Who's Who** membership directory for 1981 is currently being compiled

Is your Current Listing Correct?

Please notify Brian Elms immediately if your entry requires ammendment.



Diary Notes H.A.NSW.

May 16-24 Homeshow, Yennora
June 17 Workshop Meeting:
"Preventing theft by Customers"
July 21 Management Training

Diary Notes VH & RA

May 28 Trade Night
Wacker Aust. Pty. Ltd.
Sept. 1-5 H.A.A. Convention
Southern Cross Hotel
Melbourne



Jack Parker, B. E. Hire, Peter Para, Flextool and Dennis Rigoni enjoy a dip in the spa after the VH & R A Annual General meeting which was held this year at the home of HAA President Ron Williams.

Viewpoint . . .

by
PETER LAWRENCE

How's Your Style?

How's your style? No we're not talking about the gear you are wearing or the expertise you use on your lady friends. It's the flair you run your business with that's of interest.

The people who run hire operations up and down the country are usually down to earth type people and seem to be cast in similar moulds. Their thoughts also funnel along the same channels and their ideas bring the same results which are usually good.

But what of presentation? Do you greet your customers with a blob of grease hanging from your nose, and in a dirty paint-spattered pair of oily overalls that have not seen a laundry tub for months? The friendly voice is there but what inward ideas and visual impressions do your intending customers end up with?

And what of the tools and equipment your customer is going to hire? Do you have to dig out that electric drill from under a conglomeration of small tools that look as if they have been rumpled around in the local raffle barrel for a week?

What about that compressor you have in the yard? I wonder if it will go? Is it due for an oil change just when it is ready to go out on hire? And that concrete mixer. I won't be a minute. I'll just get the grease gun and give it a couple of squirts before you take it away.


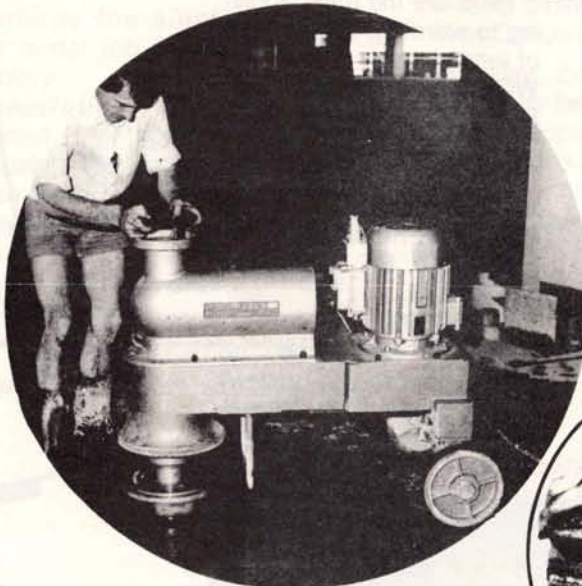
Now where did I put that hire docket? It's here somewhere. Perhaps it's in that cardboard box full of paper and last week's mail.

The phone rings and a booking for a Saturday hire is written down. On a scrap of paper! And that joins the rest of the paper in the box you have just rustled through.

Well, that's some style we have been reading about and in the main it does not attach itself to the majority of hire operations. Presentation of yourself, your operation and the way you run it is of prime importance to the general public. If your first impressions do not imprint themselves on your intending

customers you are not likely to get a second chance.

A polite and helpful manner with a ready smile with a clean and tidy operation must impress your intending customers and if it does just that, you've got style.









Mitco

- MANUFACTURERS
- DISTRIBUTORS
- CONSULTANTS

SPECIALISING IN ABRASIVES
FOR THE STONE TRADE.

FLOOR GRINDING BLOCKS

 WEDGE BLOCK	 TRIANGLE	 CASSANI	 GENOVESE	 8" x 2" x 2" BLOCK	 CIRC. LOCK
--	---	---	---	--	---

ABRASIVES FOR MARBLE • TERRAZZO • GRANITE • CONCRETE

Mitco

AUSTRALIA

457A High Street, Kew, Vic. 3101 Australia
Telephone: 861 7139, 861 6437
Postal Address: P.O. Box 82, Kew
Cables: MITCOAUST (Melb.)

Circle 92 on Reader Service Card

Save on Space and Cartage



BUY YOUR LIGHTWEIGHT FOLDING TABLES FROM ABBEY RENTS

They're a hireman's dream. Light to carry. Only 1½" wide when folded. It saves on your warehouse and cartage costs.

Available in ply or seven different attractive laminates. Write to:

87 Lambeth Street, Kensington, Victoria 3031,
for brochures and price lists, or ring (03) 376
2311 for a quote.

Name.....Phone No.
Organization.....
Address.....

Circle 90 on Reader Service Card



**NEW
FROM
TARGET**

TILE TUB SAWS

- LIGHTWEIGHT ● SIMPLE TO OPERATE
- NO MAINTENANCE ● NO BURNT OUT MOTORS

**A PROVEN
BIG MONEY SPINNER
FOR HIRE COMPANIES**

Contact your **DEMBI-CON** representative on:
New South Wales 450 1056. Victoria 288 1700
South Australia 297 4022

DEMBI-CON **AUST.**

Circle 91 on Reader Service Card

Briefly . . .

NSW may end hire purchase

The N.S.W. Government is considering a sweeping new credit law which would abolish hire purchase in NSW and provide more protection for consumers.

Under the law, hire purchase would be replaced by chattel mortgage. This would mean buyers would own goods from the time they paid a deposit.

Another measure would be a credit tribunal to adjudicate on any claims that consumers have been "ripped off" by means of harsh and unconscionable contracts.



Stihl Director of Marketing **Bob Donaldson** has been appointed President of the Australian Chain Saw Industries Association.

Think positive . . .

A smiling, positive-minded Mr Bob Ansett urged businessmen, investors and State politicians to be glowing positive about Victoria's future.

At a press conference called to announce Mr Ansett's appointment as the president of the Melbourne Chamber of Commerce Mr Ansett, said too many negative and bad things had been said and written recently about Victoria's economic prospects. "Anyone can knock," he said. "It's very easy to do, it's much more difficult to pick the positive things and work quietly on the problem areas."

Asked about Victoria's high rate of bankruptcies, rising unemployment and population drift, he said: "I am not trying to minimise the fact that there are problems, but you can build up to almost an hysteria about these problems and put them completely out of their perspective."

At the same time, on the nomination of the Confederation of Australian Industry, he becomes industry representative on the newly formed committee, which will investigate chain saw safety standards for the Standards Association of Australia.

Among things to be looked at by the committee in the process of setting future standards will be anti-vibration, noise, automatic braking, hand guards, safety chains, mufflers, etc.

Barry Bradshaw is the new Victorian sales manager for Stihl Chain Saw (Aust.) Pty. Ltd. Barry, who replaces Geoff Pickett in the position, brings to the job a wealth of experience in the small motors field.

KWIKFORM

KWIKFORM Industries Ltd. has bought the K S Electrics Pty. Ltd. for an undisclosed amount of cash.

K S Hire rents scissor-type and boom-type lifting equipment.

MANUFACTURERS NEWS ...

HEAVY DUTY PASQUALI ROTARY HOE MEETS TOUGH REQUIREMENTS FROM CONTRACTORS

The new Pasquali 931 Contractor model rotary hoe has been introduced as a heavy duty machine specially to meet the demands of contractors, equipment hirers, government agencies and councils.



the working speed appropriate to conditions can be engaged. As part of its heavy duty specification, the Pasquali rotary hoe has a dry element air cleaner and a single plate, dry clutch. Other standard items include front counterweights and adjustable handlebars to provide the best individual operating position with minimum operator fatigue. A differential lock and a kill switch which immediately shuts down the machine are further safety precautions. The 500 x 15 tyres on the machine also aid its stability.

Long life cultivator tyres are also fitted to counter the tough operating environment usually demanded from such a machine. A standard cutting width of 76cms (30 inches) is provided and a choice of two hoeing speeds can also be made depending on the soil type.

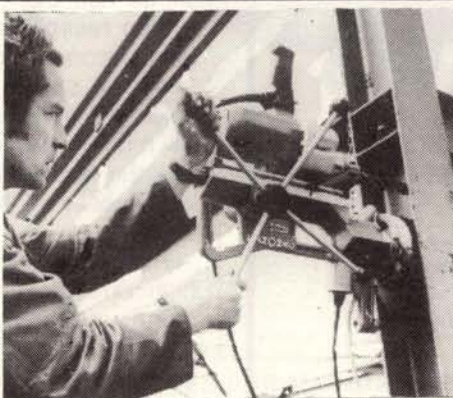
Pasquali rotary hoes have been used by home gardeners and small farmers in Australia for some years and the new Pasquali 931 Contractor has been released following demand from commercial users for a machine that will stand up to tough, everyday conditions. Further details are available on request from the Australian distributor, Motorcolt Pty. Ltd., 909 Dandenong Road, Springvale, 3171. (03) 547 4177.

MAGNETIC DRILL STAND

Fitted with 4 SPEED REVERSABLE DRILL (32mm capacity in Steel)

Horizontal, vertical and overhead drilling, grinding and tapping operations can be carried out with the use of the FINOMAG MAGNETIC DRILL STAND. The high performance magnet on a round or rectangular base ensures maximum cohesion of the unit on the workpiece.

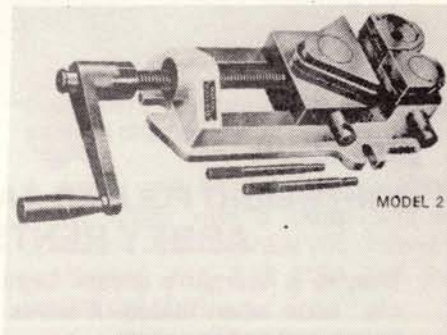
The Magnetic Drill Stand can swivel through 350° allowing accurate positioning without removal from the workpiece. When fitted with the FEIN 4 speed (all mechanical gearbox 32mm capacity drill, the combined unit becomes virtually a portable radial drill.



Drills with capacities in steel up to 50mm are also available.

Further information from:

Fein Power Tools (Australia) Pty Ltd
38 Hotham Parade Artarmon, N.S.W.



MULTIVICE GRIPS ANY SHAPE

Positive three-point gripping enables a very unusual vice, called MULTIVICE, to hold workpieces of virtually any shape, firmly and securely.

This unusual device is distributed by the ASTEG group, which specialises in engineering support products, with emphasis on improving productivity.

The laminated Multivice jaws each consist of several chisel-hard plates, which rotate and move independently. These jaws leaves each have both straight and radius edges, so they can be adjusted to effect a grip at three points on even the most complex shape: and then securely lock in this position.

If desired, the bottom leaves can be projected to form a support while the top leaves perform the gripping function... so the Multivice can perform as a production jig for repetitive production work.

This is not a toy. It has a body of meehanite casting, with exceptionally high tensile strength, and specially heat treated, hardened steel jaws.

Two models are available. The larger Model 2 has a jaw capacity of 152mm, with jaw width of 140mm, and weighs 33kg. The smaller Model 1, with its 76mm capacity, 70mm wide jaws, weighs 7kg.

Literature illustrating the operation is available from any ASTEG member, or through Marketcraft Pty. Ltd., P.O. Box 275, Glen Waverley, Vic., 3150. Telephone (03) 232 0858.

Classified Advertisements

RATES PER ISSUE: 30c per word, per insertion. Minimum ten words. Specify number of issues you wish classified ad to run. Your cheque must accompany order. Ad copy and payment must be received by the 15th of the month preceding publication — for example: June 15 for the July issue. Send copy to: Rental Industry Publications, P.O. Box 136, Bulleen, 3105, Australia. Telephone: (03) 850 5878.

EQUIPMENT FOR SALE

ELECTRIC MOTORS —

New, 3 month warranty. European style, cap start, fan cooled, foot mounted, T.E. 220/240 V 50 Hz, 2 pole.

2 HP 2800 RPM 9.6 amp \$110 FOB.

3 HP 2800 RPM 13.5 amp \$170 FOB.

Box 136 Bulleen, 3105
(03) 850 2316.

LOOK FOR IT!

HIRE ACTION AUSTRALIA! MELBOURNE 81

10th INTERNATIONAL
HIRE CONVENTION
& EQUIPMENT EXHIBITION

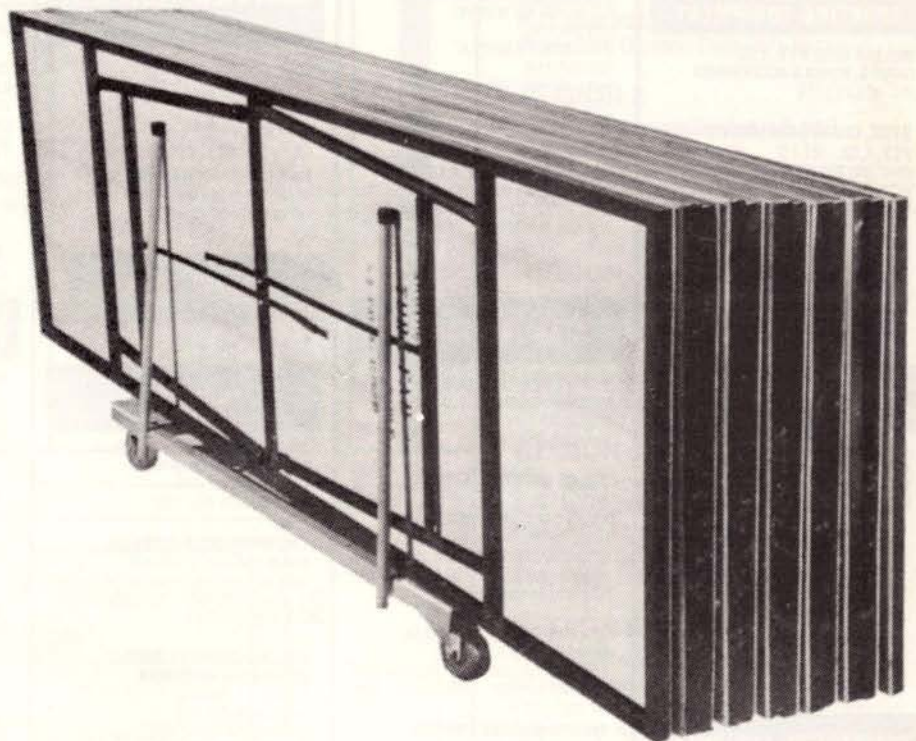
SOUTHERN CROSS HOTEL
MELBOURNE

SEPT 1-5 1981

BE THERE!

Circle 65 on Reader Service Card

MANUFACTURERS NEWS ...



Question.

What weighs only 40-lb, is 60-lb lighter than other models, and has the same strength?

Answer.

A lightweight folding table of course, says John Kroeger, of Abbey Rents who is now supplying hundreds of folding tables to industries around Australia.

"The beautiful part about a well designed folding table is that it can save the average hire company hundreds of dollars over the years," says John.

For instance, some trucks that can carry only 100 conventional folding tables from well-known Australian manufacturers can carry 250 tables of the specially-designed folding tables.

John, as Managing Director of Abbey Rents, now has a range of 128 different tables available for the rental industry.

"Rental operators appreciate a good table which can stack 20 high on a trolley and take up only 40% of the storage space in a warehouse," says John.

"For those operators who wish to save money and fit their own tops, we'll even sell the legs, or the frames that go on the bottom of the table.

"The beautiful part about a lightweight metal frame tables with a ply top is that you can take the ply top off easily after a number of years and replace it at a minimum of cost.

"We can ship or transport tables to any City in Australia. We've already had inquiries from as far afield as Gladstone in Queensland and Carnarvon in Western Australia."

Free brochures showing the photographs of tables, table accessories, folding kit-sets and table trolleys, plus all prices, are available by writing to **Abbey Rents at 87 Lambeth Street, Kensington, Victoria, 3031 (Telephone 03-376 2311).**

SUPPLIERS TO THE RENTAL INDUSTRY

Members and Associate Members of the H.A.A. and H.S.A.N.Z. Inc. who manufacture, import or distribute equipment for use in, or supply a specific service to, the rental industry.

CAMPING, LEISURE & SPORTING EQUIPMENT

HOLIAK HIRE PTY. LTD.
CANOES, KYAKS & ACCESSORIES
VIC. (03) 25 5159

STIHL CHAIN SAW (AUST.) PTY. LTD.
NSW (02) 759 8099 TAS (002) 34 4221
VIC (03) 729 3522 Q'LD (07) 52 2021
SA (08) 260 3766 WA (09) 361 5444

CATERING EQUIPMENT

ABBEY RENTS PTY. LTD.
ABBEY, ELLIS, TUBE-FAB FOLDING
TABLES, LEGS, TROLLEYS
VIC (03) 376 2311

COMPACTION EQUIPMENT

POWERED MECHANICAL AIDS
SANTO PLATES AND RAMMERS
VIC (059) 78 3211

CROMMELINS AUSTRALIA
M.B.W. RAMMERS AND PLATES
NSW (02) 649 5951 VIC (03) 876 3925
SA (085) 56 1201 WA (09) 451 6644

MESCO McCABE LIMITED
VIBROLL AND MIKASA EQUIPMENT
AUCKLAND 661 209
WELLINGTON 683 139

DYNAPAC PTY. LTD.
NSW (02) 647 1844VIC
(03) 90 8850
Q'LD (07) 376 2644WA
(09) 275 4522

WACKER AUSTRALIA PTY. LTD.
NSW (02) 648 0366 VIC (03) 547 4033
Q'LD (07) 208 9577 SA (08) 42 2331
WA (09) 361 8988

COMPRESSORS & AIR TOOLS

ATLAS COPCO AUSTRALIA PTY. LTD.
ATLAS COPCO AND AUTOMAN
N.S.W. (02) 622 444VIC
(03) 221 2466
Q'LD (07) 375 5511S.A.
(08) 47 2911
W.A. (09) 458 3331TAS.
(002) 34 6058
N.T. (089) 84 3455

COMPAIR (AUSTRALIA LTD.)
COMPAIR AND BROOMWADE
N.S.W. (02) 637 8200VIC.
(02) 544 1755
Q'LD (07) 275 2022S.A.
(08) 268 3166
W.A. (09) 325 2099TAS.
(022) 81 6280
N.T. (089) 81 6280

SULLAIR AUSTRALIA LIMITED
NSW (045) 77 4666 VIC (03) 560 7222
Q'LD (07) 376 2433 SA (08) 352 68111
WA (09) 451 3011

CONTRACTORS EQUIPMENT

POWDERED MECHANICAL AIDS
DIAMOND MOTORISED JACK
HAMMERS
VIC (059) 78 3211

ATLAS COPCO AUSTRALIA PTY. LTD.
ATLAS COPCO AND PIONJAR
NSW (02) 622 444 VIC (03) 221 2466
Q'LD (07) 375 5511 SA (08) 47 2911
WA (09) 458 3331 TAS (002) 34 6058
NT (089) 84 3455

CROMMELINS AUSTRALIA
BENFORD MIXERS
NSW (02) 645 5951 VIC (03) 876 3925
SA (085) 56 1201 WA (09) 451 6644

MESCO McCABE LIMITED
AUCKLAND 661 209
WELLINGTON 683 139

FLEXTOL (AUST.) PTY. LTD.
NSW (02) 660 3411 VIC (03) 6300
Q'LD (07) 52 2306 SA (08) 298 7788
WA (09) 451 2077 TAS (002) 43 7474
NZ WELLINGTON 43 170

WACKER AUSTRALIA PTY. LTD.
NSW (02) 648 0366 VIC (03) 547 4033
Q'LD (07) 208 9577 SA (08) 42 2331
WA (09) 361 8988

DISTRIBUTORS (CONSUMABLES & ACCESSORIES)

DEMBI-CON AUSTRALIA
JADEM & TARGET DIAMOND BLADES
NSW (02) 450 1056 VIC (03) 288 1700
Q'LD (07) 208 4240 SA (08) 297 4022
WA (09) 325 2364

BULLEEN HYGIENE SUPPLIES
TOILET TISSUES, SOAPS, ETC.
VIC (03) 850 2211

ATLAS COPCO AUSTRALIA PTY. LTD.
ATLAS COPCO, COROMANT STEELS & ACCESSORIES
NSW (02) 622 4444 VIC (03) 221 2466
Q'LD (07) 375 5511 SA (08) 47 2911
WA (09) 458 3331 TAS (002) 34 6058
NT (089) 84 3455

DRAIN & SEWER EQUIPMENT

ELECTRIC EEL (AUST)
NSW (02) 559 5622
VIC (03) 560 2843
Q'LD (07) 371 3644

POWERED MECHANICAL AIDS
SPAD DRAIN CLEANERS
VIC (059) 78 3211

ENGINES

MESCO McCABE LIMITED
ROBIN ENGINES & SPARES
AUCKLAND 661 209
WELLINGTON 683 139

CROMMELINS AUSTRALIA
ROBIN ENGINES & SPARES
NSW (02) 649 5951 VIC (03) 876 3925
Q'LD (07) 221 4011 SA (085) 56 1201
WA (09) 451 6644

DIS INDUSTRIES LIMITED.
KAWASAKI & WISCONSIN
ENGINES & SPARES
AUCKLAND 592 109
CHRISTCHURCH 41 485
WELLINGTON 847 957

FLOOR & WALL CARE

BRISBANE HIRE SERVICES PTY. LTD.
HOT SPOT WALLPAPER STRIPPERS
Q'LD (07) 356 9011

TOONGABBIE HIRE SERVICES PTY. LTD.
NU-FLOOR FLOOR SANDERS
N.S.W. (02) 636 4444

POWERED MECHANICAL AIDS
SWEEPRIE INDUSTRIAL SWEEPERS
VIC (059) 78 3211

GENERATORS

POWERLITE PTY. LTD.
NSW (02) 727 0077

MESCO McCABE LIMITED
ROBIN — PORTABLE
AUCKLAND 661 209
WELLINGTON 683 139

CROMMELINS AUSTRALIA

NSW (02) 649 5957 VIC (03) 876 3925
Q'LD (07) 277 6611 SA (085) 56 1201
WA (09) 451 6644

DIS INDUSTRIES LIMITED
KAWASAKI GENERATORS & SPARES
AUCKLAND 592 109
CHRISTCHURCH 41 485
WELLINGTON 847 957

LAWN MOWERS & GARDEN EQUIPMENT

POWERED MECHANICAL AIDS
LOBLO THE AIR BROOM LEAF
HANDLING EQUIPMENT
OLATHE STUMP CHIPPERS
VIC (059) 78 3211

STIHL CHAIN SAW (AUST.) PTY. LTD.
NSW (02) 759 8099 TAS (002) 34 4221
VIC (03) 729 3522 Q'LD (07) 52 2021
SA (08) 260 3766 WA (09) 361 5444

H.S.L. SALES
BLUEBIRD LAWN COMBERS AND
THATCHERS
VIC (03) 419 1911

ROVER MOWERS (AUST.) PTY. LTD.
GILSON TILLERS ROVER MOWERS
NSW (02) 642 0568 VIC (03) 543 3377
TAS (002) 31 2282 Q'LD (07) 268 2571
SA (08) 45 9011 WA (09) 361 6333

MATERIALS HANDLING TRUCKS & TRAILERS

POWERED MECHANICAL AIDS
FUJI CARRY DUMPS
VIC (059) 78 3211

SPEAR & JACKSON AUSTRALIA PTY. LTD.
WIRE ROBE & FITTINGS
NSW (02) 648 0573
Q'LD (07) 277 2466
VIC (03) 544 8666

H.S.L. SALES
BLUEBIRD ENGINE CRANES AND
STANDS
VIC (03) 419 1911

PRESSURE WASHERS

H.S.L. SALES
KEW WATER WASHER, INCL SET SAND
BLASTING
VIC (03) 419 1911

PUMPS & HOSES

POWERED MECHANICAL AIDS
KOSHIN PUMPS
VIC. (059) 783211

CROMMELINS AUSTRALIA
Q.P. TRASH & WATER
NSW (02) 649 5951 VIC (03) 876 3925
SA (085) 56 1201 WA (09) 451 6644

MESCO McCABE LIMITED
ROBIN, WATER
AUCKLAND 661 209
WELLINGTON 683 139

FLEXTOL (AUST.) PTY. LTD.
FLEXTOL PUMPS
NSW (02) 660 3411 VIC (03) 419 6300
Q'LD (07) 522 306 SA (08) 298 7788
WA (09) 451 2077 TAS (002) 43 7474
NZ WELLINGTON 43 170

WACKER AUSTRALIA PTY. LTD.
NSW (02) 648 0366 VIC (03) 547 4033
Q'LD (07) 208 9577 SA (08) 42 2331
WA (09) 361 8988

SANITATION (PORTABLE, CHEMICAL)

MERLIN FIBREGLASS PTY. LTD.
MF TOILETS AND SHOWERS
NSW (02) 605 5537 VIC (03) 568 1026
TAS (002) 43 7474 Q'LD (07) 48 0055
SA (08) 276 9333 WA (09) 458 1779

SUPERLOO SANITATION SERVICES
VIC (03) 791 2683

MERLIN SYSTEMS
Q'LD (07) 209 3700 SA (08) 42 5194
VIC (03) 877 4433 NSW (02) 680 2541

S.O.S. RENTALS
SUPER LOO TOILETS
Q'LD (07) 48 2193

ABC HIRE CO. PTY. LTD.
SUPERCOM PORTABLE BUILDINGS
VIC (03) 791 2683

SAWS (CONCRETE MASONRY, CHAIN, TILE, METAL, TREE CUT-OFF, etc.)

STIHL CHAIN SAW (AUST.) PTY. LTD.
NSW (02) 759 8099 TAS (002) 34 4221
VIC (03) 729 3522 Q'LD (07) 52 2021
SA (08) 260 3766 WA (09) 361 5444

DEMBI-CON AUSTRALIA
TARGET SAWS & MACHINERY
NSW (02) 450 1056 VIC (03) 288 1700
Q'LD (07) 208 4249 SA (08) 297 4022
WA (09) 325 2364

WACKER AUSTRALIA PTY. LTD.
NSW (02) 648 0366 VIC (03) 547 4033
Q'LD (07) 208 9577 SA (08) 42 2331
WA (09) 361 8988

DIS INDUSTRIES LIMITED
POULAN CHAINSAWS, CONCRETE
SAWS, ETC.
AUCKLAND 592 109
CHRISTCHURCH 41 485
WELLINGTON 847 957

SPEAR & JACKSON
AUSTRALIA PTY. LTD.
JONSEREDS CHAIN SAWS
NSW (02) 648 0573
Q'LD (07) 277 2466
VIC (03) 544 8666

DIAMOND CUTTING SERVICES
PTY. LTD.
DIAMOND SAWS, BITS &
MACHINES
N.S.W. (02) 982 9263

SITE ACCOMMODATION

ABC HIRE CO. PTY. LTD.
SUPERCOM PORTABLE BUILDINGS
VIC. (03) 791 2683

SPRAY PAINTING EQUIPMENT

CARNEGIE RENTAL CENTRE
HERO AIRLESS PAINT PUMPS
VIC (03) 211 9488

ATLAS COPCO AUSTRALIA
PTY. LTD.
ECCO AND ATLAS COPCO SPRAY GUNS
& FITTINGS
NSW (02) 622 4444 VIC (03) 221 2466
Q'LD (07) 375 5511 SA (08) 47 2911
WA (09) 458 3331 TAS (002) 34 6058
NT (089) 84 3455

FOOTNOTE:

*Listings in this feature
are available to financial
members of the H.A.A. or
H.S.A.N.Z. free of cost
upon request to Hire &
Rental Australasia, P.O.
Box 136, Bulleen, 3105,
Australia.*

TOOLS & EQUIPMENT (PORTABLE, POWER, etc.)

WINNICK MACHINES
(RUPES AUST.) PTY. LTD.
RUPES OF MILAN
NSW (02) 699 7427

STIHL CHAIN SAW (AUST.)
PTY. LTD.
NSW (02) 759 8099 TAS (002) 34 4221
VIC (03) 729 3522 Q'LD (07) 52 2021
SA (08) 260 3766 WA (09) 361 5444

CROMMELINS AUSTRALIA
MAKITA AND KANGO TOOLS & SPARES
WA (09) 451 6644

WACKER AUSTRALIA PTY. LTD.
NSW (02) 648 0366 VIC (03) 547 4033
Q'LD (07) 208 9577 SA (08) 42 2331
WA (09) 361 8988

POWERLITE PTY. LTD
KANGO TOOLS & SPARES
N.S.W. (02) 727 007

TRAVEL SERVICES

GEM TOURS AND TRAVEL
SERVICE
VIC. (03) 726 0444

HIRE & RENTAL AUSTRALASIA

The Hire Association of Australia
60-62 York Street, Sydney, 2000
President: Ron Williams (03) 211 9488
Secretary: Rolf Schufft (02) 290 0700

Hire Services Association of New Zealand
P.O. Box 822, New Plymouth, N.Z.
President: Gordon Dale (67) 79134

REGION 2

The Hire Association of N.S.W.
P.O. Box 129, Beecroft, 2119
President: Garry Butler (02) 546 1696
Executive Director: Denise Layton (02)
848 9817

REGION 3

Victorian Hire and Rental Association
185 Eastern Road, South Melbourne,
3205
President: Brian Elms (03) 850 2316
Secretary: Sydney Moody (03) 699 1022

REGION 4

The Hire Association of Queensland
C/- Sandgate Hire Service,
Hancock Street, Sandgate, 4017
President: Adrian Verney (07) 269 1673
Secretary: Dorothy Verney (07) 269 1673

REGION 5

The Hire Association of S.A.
27 Hill Street, Sea Cliff Park, 5049
President: Neil Hallett (085) 255 2741
Secretary: Mrs N. Hudson (08) 296 1001

REGION 6

The Hire Association of W.A.
C/- Skipper Mayday Machinery Ltd.,
Great Eastern Highway, Redcliffe,
6104
President: Ken Sims (09) 277 4144
Secretary: Des Brealey (09) 277 1944

Published by:

RENTAL INDUSTRY PUBLICATIONS
10 Manningham Road,
Bulleen, 3105, Australia.
Telephone: (03) 850 5878

All advertising bookings and correspondence should be directed to:
Brian Elms, C/- Box 136,
Bulleen, 3105, Australia.

EDITORIAL:

Editorial information is welcome and should reach us by the 15th of the month preceding the month of publication.

ADVERTISING:

Advertising copy, bromides, transparencies or color separation should reach us no later than the 10th of the month preceding the month of publication.

SUBSCRIPTION RATES:

Australia: \$15.00 for 11 issues

Overseas:

Seamail: \$A15.00 for 11 issues

Airmail: \$A30.00 for 11 issues



Promotional Material: Exclusively available to association members.

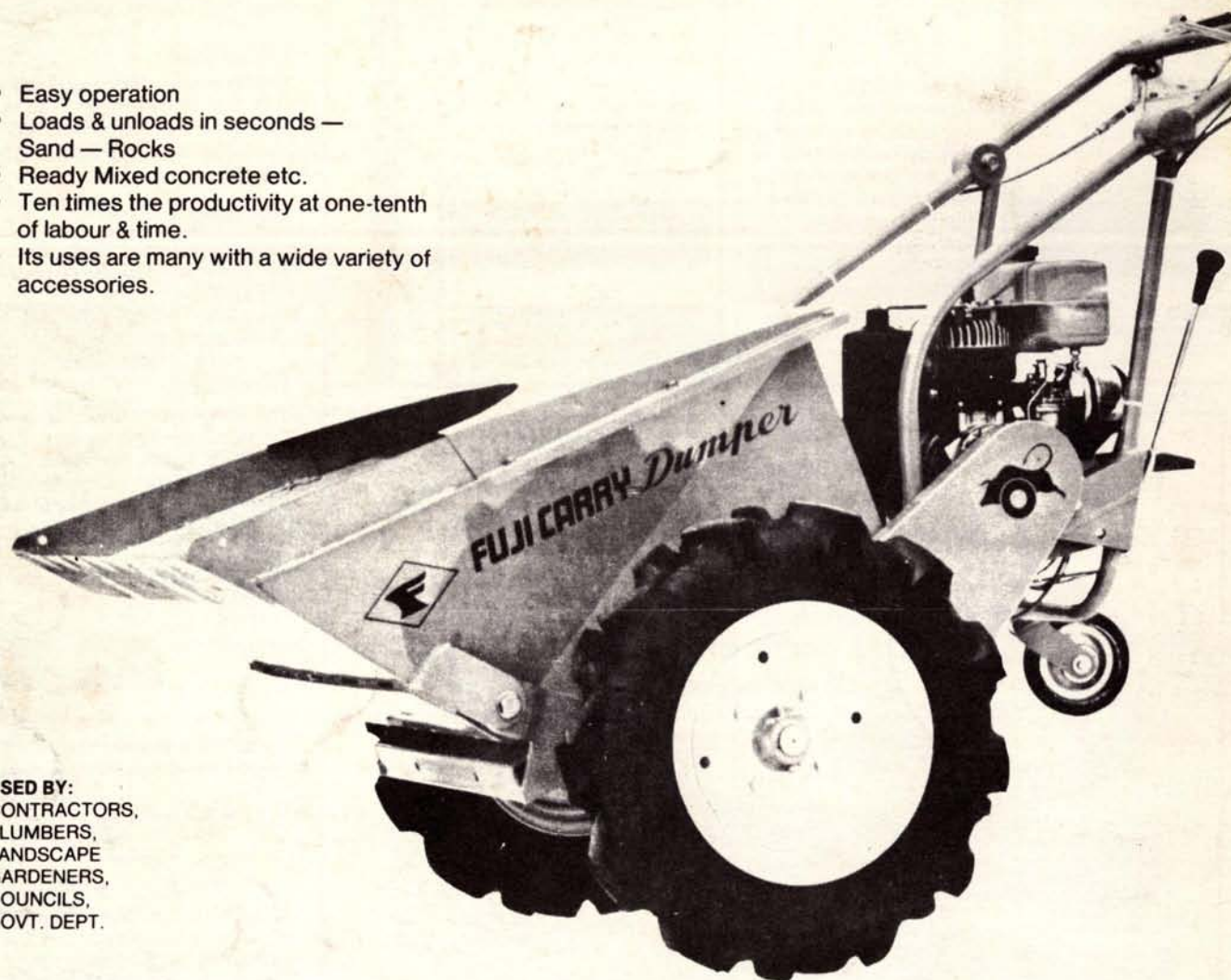
1. WINDOW DECALS — HAA MEMBERSHIP
Double Sided, 180 mm. Diameter.
2. HAA CODE OF ETHICS
Ready to frame and hang!

3. THE HIRE STORY BROCHURES
Ideal for mailing or give-away.
4. HAA LAPEL BADGES
Enamelled, red and blue.
5. NEED IT! HIRE IT! BUMPER STICKERS
Large 340 x 110 mm.
6. NEED IT! HIRE IT! BUMPER STICKERS
Medium 160 x 55 mm.
7. NEED IT! HIRE IT! BUMPER STICKERS
Small 110 x 40 mm.

FUJI CARRY *Dumper*

(Pat. Pending)

- Easy operation
- Loads & unloads in seconds — Sand — Rocks
- Ready Mixed concrete etc.
- Ten times the productivity at one-tenth of labour & time.
- Its uses are many with a wide variety of accessories.



USED BY:
CONTRACTORS,
PLUMBERS,
LANDSCAPE
GARDENERS,
COUNCILS,
GOVT. DEPT.

AUTOMATIC LOADING →



DELIVERY →



UNLOADING →



LEVELLING



AUSTRALIAN DISTRIBUTOR:

POWERED MECHANICAL AIDS

P.O. Box 524, Frankston 3199

Phone: (059) 78-3211

INTERSTATE DEALERS:

NSW: METROTRACTOR SALES (02) 726-4396

S.A.: KEITH PATTERSON (08) 44-8355

TAS.: OUTDOOR POWER EQUIP (002) 28-5245

QLD.: BILL HERAGHTY 208-4689

W.A.: Dealer Required

N.T.: Dealer Required